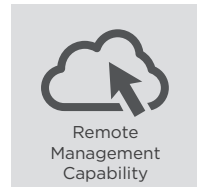
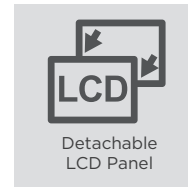
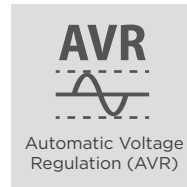
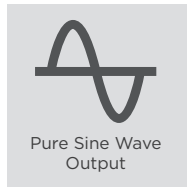
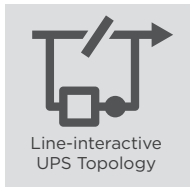




PROFESSIONAL UPS TO SAFEGUARD IT EQUIPMENT



The professional UPS with Automatic Voltage Regulation to stabilize the AC power output for business applications

Designed for computer room and server room applications, the Professional Tower Series adopts line-interactive topology with Automatic Voltage Regulation (AVR) function to offer stabilized AC power output with Pure Sine Wave to ensure high power quality. The UPSs feature hot-swappable battery packs for maintenance without power interruption. The products are also compatible with power management software to easily control and monitor the UPS system.

APPLICATION

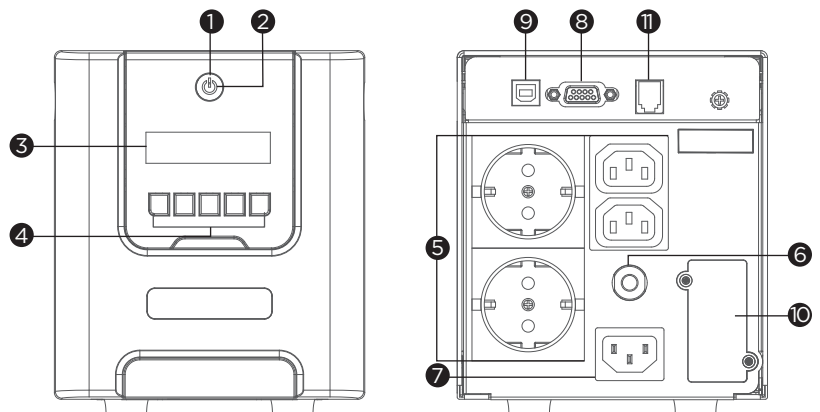
- SOHO Office
- Back Office
- Data Center
- Factory
- Train Station
- Office
- Server Room
- Supermarket
- Airport

SERIES FEATURES

- Line-interactive UPS Topology
- Active PFC Compatible
- Automatic Voltage Regulation (AVR)
- Hot-swappable Batteries
- Emergency Power Off (EPO) Port
- SNMP/HTTP Remote Management Capability (Optional)
- Energy Saving Technology
- Pure Sine Wave Output
- Overload Protection
- Detachable LCD Panel
- PowerPanel® Management Software

PRODUCT CALLOUTS

- 1 . Power On Indicator
- 2 . Power On/Off Switch
- 3 . LCD Display Panel
- 4 . Function Button(s)
- 5 . Battery Backup & Surge Protected Outlets
- 6 . Input Circuit Breaker
- 7 . AC Inlet
- 8 . Serial Port
- 9 . USB Port
- 10 . SNMP/HTTP Network Slot
- 11 . EPO Port



PR750ELCDGR



TECHNICAL SPECIFICATIONS

Model Name	PR750ELCDGR
General	
UPS Topology	Line-interactive
Energy Saving Technology	GreenPower UPS™ Bypass Technology
Active PFC Compatibility	Yes
Input	
Nominal Input Voltage (Vac)	230
Input Voltage Range (Vac)	150 - 301
Input Frequency (Hz)	50 ± 3, 60 ± 3
Input Frequency Detection	Auto-sensing
Input Connector Type	IEC C14
Output	
Capacity (VA)	750
Capacity (Watts)	675
On Battery Waveform	Pure Sine Wave
On Battery Voltage(s) (Vac)	230 ± 5%
On Battery Frequency (Hz)	50 ± 1%, 60 ± 1%
Power Factor	0.9
Automatic Voltage Regulation (AVR)	Double Boost, Single Buck
Overload Protection	Internal Current Limiting
Outlet(s) - Total	4
Outlet Type	IEC C13 x 2, Schuko x 2
Outlet(s) - Battery & Surge Protected	4
Typical Transfer Time (ms)	4
Battery	
Runtime at Half Load (min)	12
Runtime at Full Load (min)	4
Typical Recharge Time (Hours)	8
User-replaceable	Yes
Hot-swappable	Yes
Battery Type	Sealed Lead-acid
Replacement Battery Pack	RBPO014
RBP Quantity (pcs)	1
Surge Protection & Filtering	
Surge Suppression (Joules)	405
EMI/RFI Filtration	Yes
Management & Communications	
LCD Panel	Yes
Detachable LCD Panel	Yes
HID Compliant USB Port(s)	1
Serial Port	Combo (RS232 + Dry Contact)
Emergency Power Off (EPO) Port	Yes
Power Management Software	PowerPanel® Business (Recommended)
SNMP/HTTP Remote Monitoring	Yes - with optional RMCARD205
Physical	
Form Factor	Tower
Physical Size - UPS Module	
Dimensions (WxHxD) (mm.)	136 x 162 x 349
Weight (kg.)	12.3
Environmental	
Operating Temperature (°C)	0 - 40
Operating Relative Humidity (Non-condensing) (%)	0 - 95
Online Thermal Dissipation (BTU/hr)	75
Certifications	
Certifications*	CE
RoHS	Yes

*Certifications may vary according to different regions. Visit www.cyberpower.com for more information.
#All specifications are subject to change without notice.