

QUICK MAINTENANCE WITHOUT POWER INTERRUPTION

Easy switching to utility power during UPS maintenance

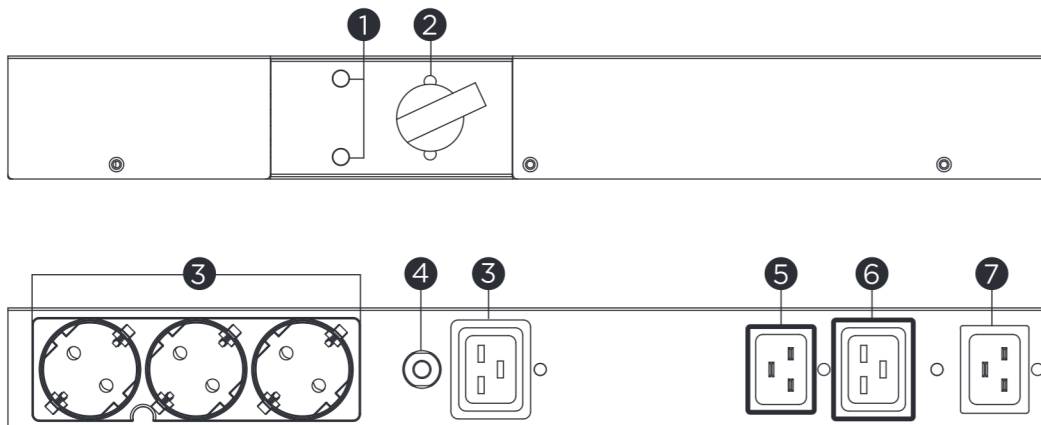
Designed for Uninterruptible Power Supply (UPS), the Maintenance Bypass PDU (MBP) Series allows utility power to bypass the UPS, so that users can perform quick and safe maintenance without having to shut down power system and connected equipment. The MBPs support flexible installation to meet different space requirement.

SERIES FEATURES

- >1U Rackmount
- LED Status Indicator
- Metal Housing
- Retaining Clip Design
- Rack Ears Included
- Cascading Design

PRODUCT CALLOUTS

- 1 . LED Status Indicator
- 2 . Maintenance Bypass Switch
- 3 . AC Outlet
- 4 . Output Circuit Breaker
- 5 . "To UPS Output" Inlet
- 6 . "To UPS Input" Outlet
- 7 . "Utility Power" Inlet



MBP20HVDE3A



TECHNICAL SPECIFICATIONS

Model Name	MBP20HVDE3A
General	
Compatible Models	OL1000ERTXL2U, OL1500ERTXL2U, OL2000ERTXL2U, OL3000ERTXL2U, OL2200ERTXL2U
Input	
Input Voltage Range (Vac)	200 - 240
Rated Input Current (A)	16
Utility Power	IEC C20
UPS Power Input	IEC C19
UPS Outlet	IEC C20
Output	
Outlet Type	IEC C19 x 1, Schuko x 3
Typical Transfer Time (ms)	<4
Cascading	Yes, IEC 16A Output Socket
Management	
LED Indicators	Normal Status (Green Color), Bypass Status (Red Color)
Physical	
Form Factor	>1U Rackmount
Physical Size	
Dimensions (WxHxD) (mm.)	433 x 51 x 76
Weight (kg.)	1.3
Environmental	
Operating Temperature (°C)	0 - 40
Operating Relative Humidity (Non-condensing) (%)	0 - 90
Certifications	
Certifications*	CE
RoHS	Yes

*Certifications may vary according to different regions. Visit www.cyberpower.com for more information.
#All specifications are subject to change without notice.

