

# Omada Pro L3 Managed Switch Datasheet

## S6500-48MPP6Y

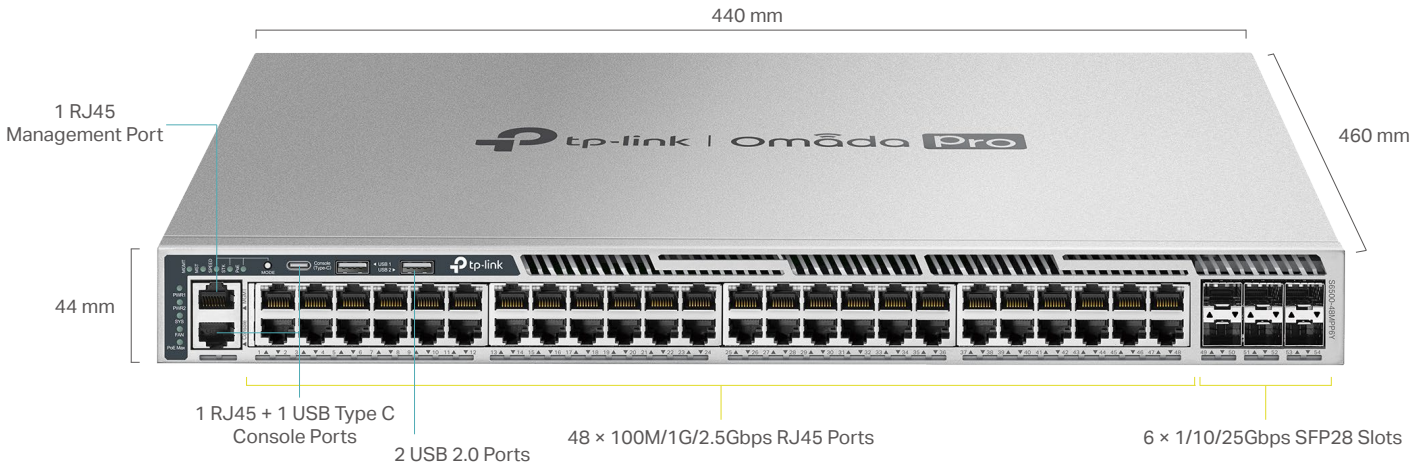
Omada Pro 48-Port 2.5G Stackable L3 Managed PoE++ Switch with 6 25G Slots



## Highlights

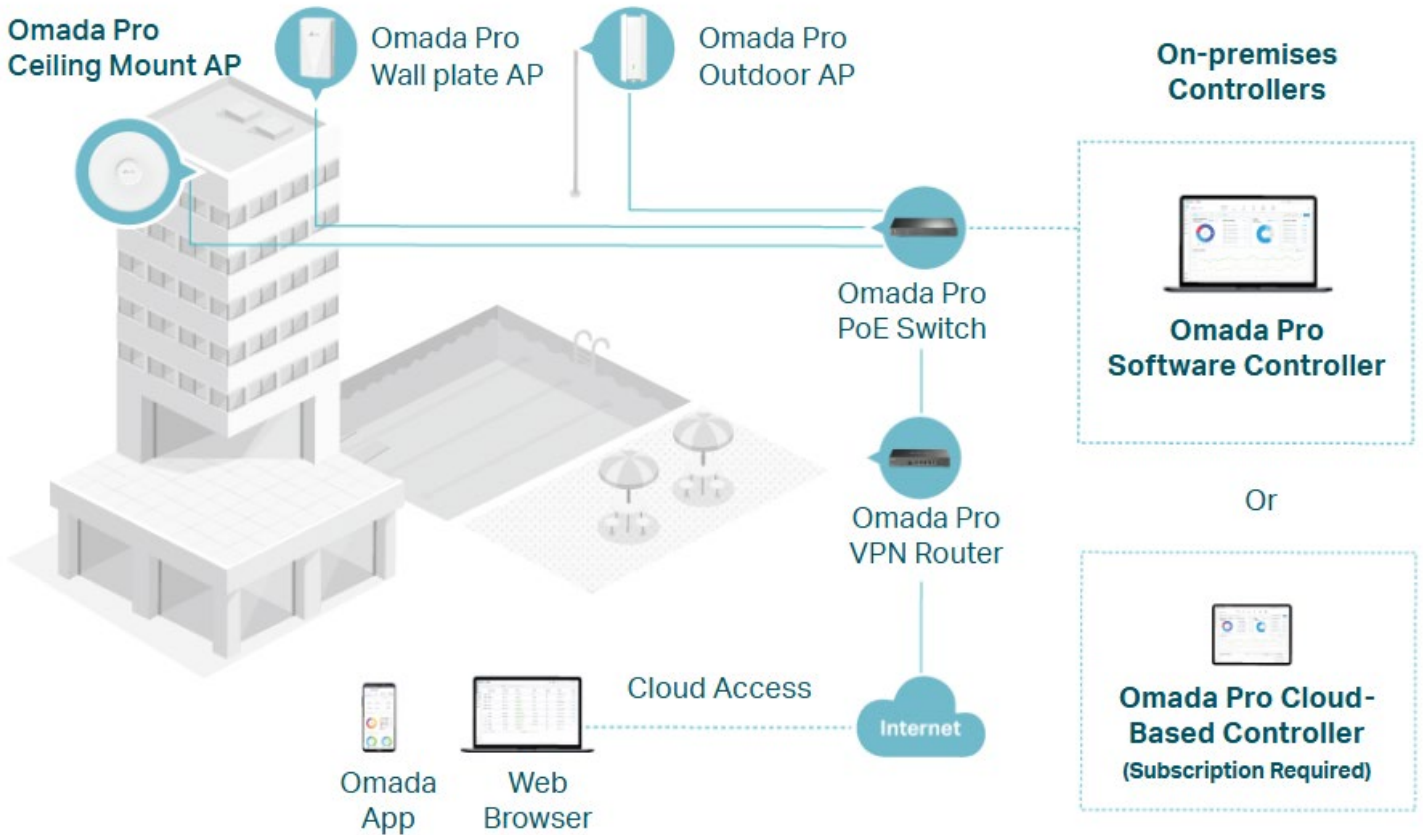
- 48× 2.5 Gbps PoE++ RJ45 ports (up to 60 W PoE out per port)
- 6× 25 Gbps SFP28 slots
- Up to 1484 W total PoE budget\*
- Physical stacking for built-in redundancy and performance
- L3 Features: OSPF, BGP, IS-IS, VRRP, PIM-SM/PIM-DM/PIM-SSM, ECMP, PBR
- Security Strategies: MACsec, Secure Boot, RADSEC, IMPB, SFTP, 802.1X, Port Security
- Highly available with two field-replaceable power supplies,\*\* VRRP, ERPS, and BFD
- Easy O&M: NETCONF, Configuration Rollback, Hot Patching, and RSPAN
- Centralized cloud management via the web or the Omada app†

# Product Pictures



# Omada Pro Solution

Omada Pro is an intelligent cloud solution for enterprise networking, offering enterprise-grade product line designed to meet the high-capacity, security, and management needs of various industries, such as MDUs, hospitality, K-12 education, public works, and more.



# Specifications

Hardware Features & Performance		
	Model	S6500-48MPP6Y
General	Interface	48 × 100M/1G/2.5Gbps RJ45 Ports 6 × 1/10/25Gbps SFP28 Slots*
	Console Ports	1 × RJ45 + 1 × USB Type C
	Management Port	1 × RJ45
	USB Ports	2 × USB 2.0
	Flash	2×4 MB Nor + 8 GB EMMC
	DRAM	4GB DDR4
	Processor	Dual-Core ARM @1.5GHz CPU
PoE	PoE Standard	IEEE 802.3af/at/bt
	PoE Ports	48, max 60W/port
	PoE Power Budget	701 W (with 1*PSM900-AC, by default) 328 W (with 1*PSM500-AC) 752 W (with 2*PSM500-AC) 1118 W (with 1*PSM500-AC and 1*PSM900-AC) 1484 W (with 2*PSM900-AC)
	Fast PoE	Yes
	Perpetual PoE	Yes
Performance	Switching Capacity	540 Gbps
	Forwarding Bandwidth	270 Gbps
	Packet Forwarding Rate	401.7 Mpps
	MAC Address Table	32 K
	Packet Buffer	3 MB
	Stacking Port	25G SFP28 slot (all uplink ports can be used as stacking ports)**
	Stacking Bandwidth	Up to 300 Gbps (6 stacking ports)
	Max Stacking Number	12 in standalone mode, 4 in Omada controller mode
	Compatible Models for Stacking	S6500-24M4Y, S6500-24MPP4Y, S6500-48M6Y, S6500-48MPP6Y
	Transmission Method	Store and Forward
	Jumbo Frame	9 KB
Physical & Environmet	Power Supply	100-240 V ~50/60 Hz
	Redundant Power Supply	Max 2 hot swappable power supply module, N+1 redundant (shipping with one PSM900-AC module by default)***
	Suitable Power Supply Module	PSM500-AC, PSM900-AC
	Max Power Consumption	142.2 W (110 V/60 Hz) (With no PD connected) 1,887.4 W (110 V/60 Hz) (With 1484W PD connected and powered by 2× PSM900-AC)
	Max Heat Dissipation	484.9 BTU/hr (110 V/60 Hz) (With no PD connected) 6,436.03 BTU/hr (110 V/60 Hz) (With 1484W PD connected and powered by 2× PSM900-AC)
	Standby Power Consumption	88.8 W (220 V/50 Hz)
	Noise	1× PSM900-AC power supply module: Min: 36.4 dBA @1m 25 °C Max: 60.5 dBA @1m 25 °C 2× PSM900-AC power supply modules: Min: 39.9 dBA @1m 25 °C Max: 63.8 dBA @1m 25 °C
	Fan Quantity	4 hot swappable fan modules N+1 redundant
	Airflow	Front-to-back
	Surge Protection	Service port: ±6 kV in common mode Power port: ±6 kV in differential mode; ±6 kV in common mode
	ESD Protection	Air: ±15 kV, Contact: ±8 kV
	MTBF	594,101 h @ 25 °C
	Dimensions (W x D x H)	17.3 × 18.1 × 1.7 in (440 × 460 × 44 mm)
	Installation	Rackmount
	Operating Temperature & Altitude	-5 °C to 45 °C (23 °F to 113 °F) @ 2,000 meters -5 °C to 40 °C (23 °F to 104 °F) @ 3,000 meters
	Storage Temperature	-40 °C to 70 °C (-40 °F to 158 °F)
	Operation Humidity	10% to 90% RH, non-condensing
Storage Humidity	5% to 90% RH, non-condensing	
Certification	CE, FCC, RoHS	

\*No more than two 10G RJ45 SFP+ modules are supported, and they can only be inserted into slots 49&53.

\*\*The 25G SFP28 slots support stacking only through 25G DAC/25G SFP28 modules rather than 10G DAC/10G SFP+ modules.

\*\*\*An additional power supply module needs to be purchased separately.

## Software Features<sup>^</sup>

Model		S6500-48MPP6Y	
System	System Info	<ul style="list-style-type: none"> <li>• Device Description                             <ul style="list-style-type: none"> <li>- Name</li> <li>- Location</li> <li>- System Contact</li> </ul> </li> <li>• System Time                             <ul style="list-style-type: none"> <li>- Manual</li> <li>- Synchronize with PC's Clock</li> <li>- SNTP Client</li> </ul> </li> <li>• DST                             <ul style="list-style-type: none"> <li>- Predefined Mode</li> <li>- Recurring Mode</li> <li>- Date Mode</li> </ul> </li> </ul>	<ul style="list-style-type: none"> <li>• LED                             <ul style="list-style-type: none"> <li>- LED on/off</li> </ul> </li> <li>• System IP                             <ul style="list-style-type: none"> <li>- Static IP/DHCP/BOOTP</li> </ul> </li> <li>• System IPv6                             <ul style="list-style-type: none"> <li>- Link-local Address Config</li> <li>- Global Address Autoconfig via RA Message</li> <li>- Global Address Autoconfig via DHCPv6 Server</li> <li>- Add a Global Address Manually</li> </ul> </li> </ul>
	User Management	<ul style="list-style-type: none"> <li>• User Settings</li> <li>• Access Level: 4 levels</li> </ul>	<ul style="list-style-type: none"> <li>• Password Recovery Settings</li> </ul>
	System Tools	<ul style="list-style-type: none"> <li>• Config Restore/Backup                             <ul style="list-style-type: none"> <li>- Web: HTTP</li> <li>- CLI: TFTP/Flash/USB</li> </ul> </li> <li>• Firmware Upgrade                             <ul style="list-style-type: none"> <li>- Web: HTTP</li> <li>- CLI: TFTP/Flash/USB</li> </ul> </li> </ul>	<ul style="list-style-type: none"> <li>• System Reboot</li> <li>• System Reset</li> <li>• Boot Config (Dual Image)</li> <li>• Reboot Schedule</li> <li>• Config Rollback</li> <li>• Hot Patch</li> </ul>
	Access Security	<ul style="list-style-type: none"> <li>• Access Control Config                             <ul style="list-style-type: none"> <li>- IP-based</li> <li>- MAC-based</li> <li>- Port-based</li> <li>- IPv6-based</li> </ul> </li> <li>• HTTP Config                             <ul style="list-style-type: none"> <li>- Enable/Disable</li> <li>- Session Config</li> <li>- Access User Number</li> <li>- Port Setting</li> </ul> </li> <li>• SSL Config                             <ul style="list-style-type: none"> <li>- SSLv3/TLSv1 Enable/Disable</li> <li>- CipherSuite Config</li> <li>- IPv6 SSL</li> </ul> </li> </ul>	<ul style="list-style-type: none"> <li>• SSH Config                             <ul style="list-style-type: none"> <li>- Enable/Disable</li> <li>- v2</li> <li>- Encryption Algorithm</li> <li>- Data Integrity Algorithm</li> <li>- Port Setting</li> <li>- IPv6 SSH</li> </ul> </li> <li>• Telnet Config                             <ul style="list-style-type: none"> <li>- Enable/Disable</li> <li>- Port Setting</li> <li>- IPv6 Telnet</li> </ul> </li> <li>• Console Port                             <ul style="list-style-type: none"> <li>- Baud Rate setting</li> </ul> </li> </ul>
	Stack	<ul style="list-style-type: none"> <li>• Stack Setting</li> <li>• Stack-port LAG: up to 6 groups, each group supports a maximum of all stackable-ports</li> </ul>	<ul style="list-style-type: none"> <li>• Stackable Devices: up to 12 devices</li> <li>• Stack MAC Address Switching Delay</li> </ul>
	SDM Template	<ul style="list-style-type: none"> <li>• Default Template                             <ul style="list-style-type: none"> <li>- IPv4 ACL Rules: 300 entries</li> <li>- MAC ACL Rules: 300 entries</li> <li>- Combined ACL: 300 entries</li> <li>- IPv4 Source Guard: 299 entries</li> </ul> </li> <li>• IPv4 Access                             <ul style="list-style-type: none"> <li>- IPv4 ACL Rules: 0 entries</li> <li>- MAC ACL Rules: 300 entries</li> <li>- Combined ACL: 500 entries</li> <li>- IPv4 Source Guard: 499 entries</li> </ul> </li> </ul>	<ul style="list-style-type: none"> <li>• IPv6 Access                             <ul style="list-style-type: none"> <li>- IPv4 ACL Rules: 0 entries</li> <li>- MAC ACL Rules: 200 entries</li> <li>- IPv6 ACL: 250 entries</li> <li>- IPv6 Source Guard: 249 entries</li> </ul> </li> <li>• Omada                             <ul style="list-style-type: none"> <li>- IPv4 ACL Rules: 0 entries</li> <li>- MAC ACL Rules: 0 entries</li> <li>- Combined ACL: 600 entries</li> <li>- IPv6 ACL: 150 entries</li> <li>- IPv4 Source Guard: 0 entries</li> </ul> </li> </ul>
	Time Range	<ul style="list-style-type: none"> <li>• Time Range Config</li> </ul>	<ul style="list-style-type: none"> <li>• Holiday Config</li> </ul>
	File System	<ul style="list-style-type: none"> <li>• File Operation</li> <li>• FTP</li> <li>• SFTP</li> </ul>	<ul style="list-style-type: none"> <li>• SCP</li> <li>• TFTP</li> <li>• USB Storage</li> </ul>

## Software Features<sup>^</sup>

Model		S6500-48MPP6Y	
L2 Features	Port	<ul style="list-style-type: none"> <li>• Auto Negotiation/Auto MDI/MDIX</li> <li>• Port config                             <ul style="list-style-type: none"> <li>- Status</li> <li>- Speed and Duplex</li> <li>- Flow Control(802.3x)</li> <li>- Jumbo Frame: 1518-9216 KB</li> </ul> </li> <li>• Port Mirror                             <ul style="list-style-type: none"> <li>- Ingress (Many to One)</li> <li>- Egress (Many to One)</li> <li>- RSPAN</li> </ul> </li> </ul>	<ul style="list-style-type: none"> <li>• Port Security                             <ul style="list-style-type: none"> <li>- Learn mode: Dynamic/Static/Permanent/Sticky</li> <li>- Port Max Learned MAC: 64</li> <li>- Current Learned Number</li> <li>- Status</li> <li>- Exceed Max Learned Trap</li> </ul> </li> <li>• Port Isolation</li> <li>• Loopback Detection                             <ul style="list-style-type: none"> <li>- Alert</li> <li>- Port Based</li> <li>- VLAN Based</li> </ul> </li> </ul>
	DDM		
	LAG	<ul style="list-style-type: none"> <li>• Hash Algorithm: SRC MAC/DST MAC/SRC MAC + DST MAC/SRC IP/DST IP/SRC IP + DST IP</li> </ul>	<ul style="list-style-type: none"> <li>• Static LAG: Up to 64 groups, up to 8 ports per group</li> <li>• LACP(802.3ad)</li> </ul>
	Traffic Monitor	<ul style="list-style-type: none"> <li>• TX Packets/Bytes</li> <li>• RX Packets/Bytes</li> <li>• TX Unicast/Multicast/Broadcast</li> <li>• RX Unicast/Multicast/Broadcast</li> </ul>	<ul style="list-style-type: none"> <li>• TX Errors</li> <li>• RX Errors</li> <li>• RX Packet Size Analysis</li> </ul>
	MAC Address	<ul style="list-style-type: none"> <li>• MAC Address Table: 32K entries</li> <li>• IVL/SVL: IVL</li> <li>• Create Static Unicast Address</li> </ul>	<ul style="list-style-type: none"> <li>• Bind Dynamic Address</li> <li>• Create Filtering Address</li> <li>• MAC Notification Settings</li> </ul>
	VLAN	<ul style="list-style-type: none"> <li>• 802.1Q VLAN(802.1q): 4K VLANs</li> <li>• MAC VLAN: 200 entries</li> <li>• Protocol VLAN                             <ul style="list-style-type: none"> <li>- 16 Protocol VLAN Template</li> <li>- 12 Protocol VLAN Group</li> </ul> </li> </ul>	<ul style="list-style-type: none"> <li>• QinQ(VLAN VPN): 256 entries</li> <li>• Private VLAN</li> <li>• GVRP</li> </ul>
	Multicast	<ul style="list-style-type: none"> <li>• Max Multicast Groups: 4K (IPv4,IPv6)</li> <li>• IGMP Snooping                             <ul style="list-style-type: none"> <li>- IGMP V1/V2/V3</li> <li>- Report Message Suppression</li> <li>- Fast Leave</li> <li>- Unknown Multicast Discard</li> <li>- Static Multicast Groups</li> <li>- IGMP Snooping Querier</li> <li>- IGMP Packet Statistics</li> <li>- IGMP Authentication</li> <li>- Multicast Filtering: 256 profiles and 16 entries per profile</li> <li>- Router Port Setting: Static Router Port/Forbidden Router Port</li> </ul> </li> <li>• MVR</li> </ul>	<ul style="list-style-type: none"> <li>• MLD Snooping                             <ul style="list-style-type: none"> <li>- MLD V1/V2</li> <li>- Report Message Suppression</li> <li>- Unknown Multicast Discard</li> <li>- Fast Leave</li> <li>- Static Multicast Groups</li> <li>- MLD Snooping Querier</li> <li>- MLD Packet Statistics</li> <li>- Multicast Filtering: 256 profiles and 16 entries per profile</li> <li>- Router Port Setting: Static Router Port/Forbidden Router Port</li> </ul> </li> <li>• Multicast Table                             <ul style="list-style-type: none"> <li>- IPv4 Multicast Table</li> <li>- IPv6 Multicast Table</li> </ul> </li> </ul>
	STP	<ul style="list-style-type: none"> <li>• STP(802.1d)</li> <li>• RSTP(802.1w)</li> <li>• MSTP(802.1s)</li> <li>• MSTI entries: 16</li> </ul>	<ul style="list-style-type: none"> <li>• STP Security                             <ul style="list-style-type: none"> <li>- Loop Protect</li> <li>- Root Protect</li> <li>- TC Protect</li> <li>- BPDU Protect</li> <li>- BPDU Filter</li> </ul> </li> </ul>
	LLDP (802.1ab)	<ul style="list-style-type: none"> <li>• Enable/Disable</li> <li>• Local Info</li> <li>• Neighbor Info</li> <li>• Statistic Info</li> </ul>	<ul style="list-style-type: none"> <li>• LLDP-MED                             <ul style="list-style-type: none"> <li>- Local Info</li> <li>- Neighbor Info</li> </ul> </li> </ul>
	L2PT	<ul style="list-style-type: none"> <li>• Layer 2 Protocol Tunneling</li> </ul>	
	PPPoE ID Insertion	<ul style="list-style-type: none"> <li>• Circuit-ID Type                             <ul style="list-style-type: none"> <li>- IP</li> <li>- MAC</li> <li>- UDF</li> <li>- UDF-ONLY</li> </ul> </li> </ul>	<ul style="list-style-type: none"> <li>• Remote-ID</li> </ul>
	PoE	<ul style="list-style-type: none"> <li>• PoE Power Budget (Max): 1484W</li> <li>• Port Config                             <ul style="list-style-type: none"> <li>- PoE Status: Enabled/Disabled</li> <li>- PoE Priority: Low/Middle/High</li> <li>- Power Limit</li> <li>- Time Range</li> <li>- PoE Profile</li> </ul> </li> </ul>	<ul style="list-style-type: none"> <li>• PoE Profile Config</li> <li>• PoE Auto Recovery</li> </ul>
	ERPS	<ul style="list-style-type: none"> <li>• Ring: 16</li> </ul>	
	Virtual MAC		
Sticky MAC			

# Software Features<sup>^</sup>

Model		S6500-48MPP6Y		
L3 Features	L3 INTERFACE: 256(IPv4,IPv6)			
	STATIC ROUTE: 1024 IPv4, 512 IPv6			
	IPv4 Host Router entries + IPv6 Host Router entries: 6100			
	IPv4 Network Router entries: 10240 (shared with IPv6 Network Router entries) IPv6 Network Router entries: 5120 (shared with IPv4 Network Router entries)			
	ECMP	<ul style="list-style-type: none"> <li>• ECMP entries: 256</li> <li>• MAX-PATH: 32</li> </ul>		
	ARP	<ul style="list-style-type: none"> <li>• Static ARP: 512</li> <li>• Dynamic ARP: 7680</li> </ul>		
	ND: 7680			
	DHCP	<ul style="list-style-type: none"> <li>• DHCP Server                             <ul style="list-style-type: none"> <li>- IP Pool: 64</li> <li>- IP MAX entries: 8000</li> <li>- Manual Binding: 1000</li> <li>- Excluded IP Range: 100</li> </ul> </li> </ul>	<ul style="list-style-type: none"> <li>• DHCP Relay</li> <li>• DHCP L2 Relay</li> <li>• DHCPv6 Relay</li> <li>• DHCPv6 L2 Relay</li> </ul>	
	VRRP	<ul style="list-style-type: none"> <li>• VRRP V2/V3</li> <li>• VRRP Instance: 64</li> <li>• VRRP Virtual IP: 32 per instance</li> </ul>		
	OSPF	<ul style="list-style-type: none"> <li>• OSPFv2                             <ul style="list-style-type: none"> <li>- OSPF Instance: 16</li> <li>- Network entries: 256 entries</li> <li>- Area entries For Stub Or NSSA: 16 per instance</li> <li>- AreaRange entries: 16 per instance</li> <li>- Virtual-link entries: 16 per instance</li> <li>- Redistribute: conneted/static/RIP/OSPF/IS-IS/BGP</li> <li>- Graceful Restart</li> <li>- OSPFv2 BFD</li> </ul> </li> </ul>	<ul style="list-style-type: none"> <li>• OSPFv3                             <ul style="list-style-type: none"> <li>- Area entries For Stub Or NSSA: 16 per instance</li> <li>- AreaRange entries: 16 per instance</li> <li>- Redistribute: conneted/static/RIPng/IS-IS</li> <li>- OSPFv3 BFD</li> </ul> </li> </ul>	
	RIP	<ul style="list-style-type: none"> <li>• RIPv1/v2                             <ul style="list-style-type: none"> <li>- Network entries: 256</li> <li>- Redistribute entries: 20</li> <li>- Redistribute: BGP/connected/OSPF/IS-IS/static</li> </ul> </li> </ul>	<ul style="list-style-type: none"> <li>• RIPng                             <ul style="list-style-type: none"> <li>- Redistribute: connected/OSPFv3/IS-IS/static</li> </ul> </li> </ul>	
	IS-IS	<ul style="list-style-type: none"> <li>• IS-IS Interfaces: 128</li> <li>• IS-IS Area Numbers: 3</li> <li>• Redistribute: BGP/connected/OSPF/OSPFv3/RIP/static/RIPng</li> </ul>	<ul style="list-style-type: none"> <li>• Max Redistribute Configs: 10</li> <li>• IS-IS IPV6</li> <li>• IS-IS BFD</li> </ul>	
	BGP	<ul style="list-style-type: none"> <li>• Redistribute: IS-IS/connected/OSPF/RIP/static</li> </ul>	<ul style="list-style-type: none"> <li>• Max Redistribute Configs: 20</li> </ul>	
	PIM	<ul style="list-style-type: none"> <li>• PIM-DM</li> <li>• PIM-SM</li> <li>• PIM-SSM</li> </ul>	<ul style="list-style-type: none"> <li>• IP Multicast Route entries: 1K</li> <li>• PIM Neighbors: 256</li> <li>• Max PIM Interfaces: 128</li> </ul>	
	IGMP	<ul style="list-style-type: none"> <li>• Version: v1/v2/v3</li> </ul>	<ul style="list-style-type: none"> <li>• IGMP Multicast Groups: 2K</li> </ul>	
	BFD	<ul style="list-style-type: none"> <li>• Template Numbers: 16</li> </ul>	<ul style="list-style-type: none"> <li>• Session Numbers: 8</li> </ul>	
	PBR			
uRPF				
QoS	Class of Service	<ul style="list-style-type: none"> <li>• Priority Queues: 8 Queues</li> <li>• Port Priority</li> <li>• 802.1P Priority</li> <li>• DSCP/ToS Priority</li> </ul>	<ul style="list-style-type: none"> <li>• Priority Schedule Mode: SP/WRR per Queue</li> <li>• Queue Weight Config: For WRR/SP+WRR Mode</li> </ul>	
	Bandwidth Control	<ul style="list-style-type: none"> <li>• Rate Limit                             <ul style="list-style-type: none"> <li>- Ingress Rate Limit</li> <li>- Egress Rate Limit</li> <li>- Rate Limit Grade: 64kbps</li> </ul> </li> </ul>	<ul style="list-style-type: none"> <li>• Storm Control                             <ul style="list-style-type: none"> <li>- Control Mode: kbps/ratio</li> <li>- Broadcast</li> <li>- Multicast</li> <li>- Unknown Unicast</li> </ul> </li> </ul>	
	Voice VLAN	<ul style="list-style-type: none"> <li>• Supported OUI Numbers: 64</li> </ul>		
	WRED	<ul style="list-style-type: none"> <li>• WRED profile: 16</li> </ul>		

## Software Features<sup>^</sup>

Model		S6500-48MPP6Y		
Network Security	IP-MAC Binding	<ul style="list-style-type: none"> <li>• Binding entries: 1024 entries</li> <li>• Manual Binding</li> </ul>	<ul style="list-style-type: none"> <li>• ARP Scanning</li> <li>• DHCP Snooping</li> </ul>	
	IPv6-MAC Binding	<ul style="list-style-type: none"> <li>• Binding entries: 1024 entries</li> <li>• Manual Binding</li> </ul>	<ul style="list-style-type: none"> <li>• DHCPv6 Snooping</li> <li>• ND Snooping</li> </ul>	
	ARP Inspection	<ul style="list-style-type: none"> <li>• ARP Detect entries: 1024 entries</li> <li>• ARP Detect</li> </ul>	<ul style="list-style-type: none"> <li>• ARP Defend</li> <li>• ARP Statistics</li> </ul>	
	ND Detection	<ul style="list-style-type: none"> <li>• ND Detection entries: 1024 entries</li> <li>• ND Detect</li> </ul>	<ul style="list-style-type: none"> <li>• ND Statistics</li> </ul>	
	IP Source Guard	<ul style="list-style-type: none"> <li>• IP Source Guard entries</li> <li>- Default SDM Template: 299</li> <li>- IPv4 SDM Template: 499</li> <li>- IPv6 SDM Template: 0</li> </ul>	<ul style="list-style-type: none"> <li>• Security Type</li> <li>- Source IP</li> <li>- Source IP + Source MAC</li> </ul>	
	IPv6 Source Guard	<ul style="list-style-type: none"> <li>• IPv6 Source Guard entries</li> <li>- Default SDM Template: 0</li> <li>- IPv4 SDM Template: 0</li> <li>- IPv6 SDM Template: 249</li> </ul>	<ul style="list-style-type: none"> <li>• Security Type</li> <li>- Source IPv6</li> <li>- Source IPv6 + Source MAC</li> </ul>	
	RA Guard: 30 entries			
	DoS Defend	<ul style="list-style-type: none"> <li>• Scan SYNFIN</li> <li>• Xmascan</li> <li>• NULL Scan</li> </ul>	<ul style="list-style-type: none"> <li>• SYN sPort less 1024</li> <li>• Ping Flooding</li> <li>• SYN/SYN-ACK Flooding</li> </ul>	
	DHCP Filter	<ul style="list-style-type: none"> <li>• DHCPv4 Filter</li> <li>- Legal Server entries: 200</li> </ul>	<ul style="list-style-type: none"> <li>• DHCPv6 Filter</li> <li>- Legal Server entries: 200</li> </ul>	
	802.1x	<ul style="list-style-type: none"> <li>• Control Type</li> <li>- Port Based</li> <li>- MAC Based</li> <li>• Auth Method: PAP/EAP-MD5/EAP-TLS/EAP-TTLS/EAP-PEAP</li> </ul>	<ul style="list-style-type: none"> <li>• Radius Authentication</li> <li>• Radius Accounting</li> <li>• Radius Server Load Balancing</li> <li>• RADSEC</li> <li>• Guest VLAN</li> </ul>	
	AAA			
	ACL	<ul style="list-style-type: none"> <li>• Time-Range</li> <li>- Time Slice</li> <li>- Week Time-Range</li> <li>- Absolute Time-Range</li> <li>- Holiday</li> <li>• MAC ACL</li> <li>- Source MAC</li> <li>- Destination MAC</li> <li>- VLAN ID</li> <li>- EtherType</li> <li>- User Priority</li> <li>• IP ACL</li> <li>- Source IP</li> <li>- Destination IP</li> <li>- IP Protocol</li> <li>- TCP Flag</li> <li>- TCP/UDP Source Port</li> <li>- TCP/UDP Destination Port</li> <li>- DSCP/IP ToS</li> <li>• Combined ACL</li> <li>• IPv6 ACL</li> <li>• Rule Operation</li> <li>- Permit</li> <li>- Deny</li> <li>• Policy Action</li> <li>- Mirror</li> <li>- Rate Limit</li> <li>- Redirect</li> <li>- QoS Remark</li> <li>• Binding</li> <li>- Port Binding</li> <li>- VLAN Binding</li> </ul>	<ul style="list-style-type: none"> <li>• Default Template</li> <li>- IPv4 ACL Rules: 300 entries</li> <li>- IPv6 ACL Rules: 0 entries</li> <li>- MAC ACL Rules: 300 entries</li> <li>- Combined ACL: 300 entries</li> <li>• IPv4 Access</li> <li>- IPv4 ACL Rules: 0 entries</li> <li>- IPv6 ACL Rules: 0 entries</li> <li>- MAC ACL Rules: 300 entries</li> <li>- Combined ACL: 500 entries</li> <li>• IPv6 Access</li> <li>- IPv4 ACL Rules: 0 entries</li> <li>- IPv6 ACL Rules: 250 entries</li> <li>- MAC ACL Rules: 200 entries</li> <li>- Combined ACL: 0 entries</li> <li>• Omada</li> <li>- IPv4 ACL Rules: 0 entries</li> <li>- IPv6 ACL Rules: 150 entries</li> <li>- MAC ACL Rules: 0 entries</li> <li>- Combined ACL: 600 entries</li> </ul>	
	MACSec (gcm-aes-128, gcm-aes-256)			
	Secure boot			
Virtualization	IP Tunnel	<ul style="list-style-type: none"> <li>• IPv6 over IPv4</li> <li>• IPv6 over IPv4 GRE</li> </ul>	<ul style="list-style-type: none"> <li>• IPv4 over IPv4 GRE</li> <li>• Tunnel entries: 100</li> </ul>	

## Software Features<sup>^</sup>

Model		S6500-48MPP6Y		
Maintenance	System Monitor	<ul style="list-style-type: none"> <li>• CPU Monitor</li> <li>• Memory Monitor</li> </ul>		
	sFlow			
	OAM	<ul style="list-style-type: none"> <li>• EFM                             <ul style="list-style-type: none"> <li>- Link Monitoring</li> <li>- Remote Failure Indication Config</li> <li>- Statistics</li> </ul> </li> </ul>		
	DLDP			
	SNMP	<ul style="list-style-type: none"> <li>• SNMP Version: v1/v2c/v3</li> <li>• SNMP Config                             <ul style="list-style-type: none"> <li>- Global Config</li> <li>- SNMP View</li> <li>- SNMP Group</li> <li>- SNMP User</li> <li>- SNMP Community</li> </ul> </li> </ul>	<ul style="list-style-type: none"> <li>• Notification                             <ul style="list-style-type: none"> <li>- Trap: IPv4/IPv6</li> <li>- Inform: IPv4/IPv6</li> </ul> </li> <li>• RMON v1/v2</li> <li>• Public MIBs</li> <li>• Private MIBs</li> </ul>	
	MIBs	<ul style="list-style-type: none"> <li>• MIB II (RFC1213)</li> <li>• Interface MIB (RFC2233)</li> <li>• Ethernet Interface MIB (RFC1643)</li> <li>• Bridge MIB (RFC1493)</li> <li>• P/Q-Bridge MIB (RFC2674)</li> <li>• RMON MIB (RFC2819)</li> <li>• RMON2 MIB (RFC2021)</li> </ul>	<ul style="list-style-type: none"> <li>• RADIUS Accounting Client MIB (RFC2620)</li> <li>• RADIUS Authentication Client MIB (RFC2618)</li> <li>• Remote Ping, Traceroute MIB (RFC2925)</li> <li>• Support TP-Link Private MIB</li> </ul>	
	NETCONF			
	IEEE 802.3az Energy Efficient Ethernet (EEE)			
	DHCP Auto Install			
	Log	<ul style="list-style-type: none"> <li>• Display/Filtering</li> <li>• Severity Level</li> <li>• Save to Flash</li> </ul>	<ul style="list-style-type: none"> <li>• Remote Host</li> <li>• Backup Log</li> </ul>	
	Device Diagnostics	<ul style="list-style-type: none"> <li>• Cable Test</li> </ul>		
	Network Diagnostics	<ul style="list-style-type: none"> <li>• Ping</li> <li>• IPv6 Ping</li> </ul>	<ul style="list-style-type: none"> <li>• Tracert</li> <li>• IPv6 Tracert</li> </ul>	
	Others	Index		
Show running config		<ul style="list-style-type: none"> <li>• Use the show running config command to view device's running status via telnet.</li> <li>• Configuration File: Import/Export/Edit</li> </ul>		
Omada SDN Controller	Omada Pro SDN controller			



# Ordering Information

## Host Switch

Model	Description
S6500-48MPP6Y	Omada Pro 48-Port 2.5G Stackable L3 Managed PoE++ Switch with 6 25G Slots

## Power Supply Module

Model	Description
PSM500-AC	500 W AC Power Supply Module
PSM900-AC	900 W AC Power Supply Module

## SFP/SFP+/SFP28 Module

Model	Description
SM311LS	Gigabit SFP module, Single-mode, LC interface, Up to 20km distance
SM311LM	Gigabit SFP module, Multi-mode, LC interface, Up to 550m distance
SM321A	Gigabit WDM Bi-Directional SFP Module, single-mode, LC connector, TX: 1550 nm/RX: 1310 nm, 20 km
SM321A-2	Gigabit WDM Bi-Directional SFP Module, single-mode, LC connector, TX: 1550 nm/RX: 1310 nm, 2 km
SM321B	Gigabit WDM Bi-Directional SFP Module, single-mode, LC connector, TX: 1310 nm/RX: 1550 nm, 20 km
SM321B-2	Gigabit WDM Bi-Directional SFP Module, single-mode, LC connector, TX: 1310 nm/RX: 1550 nm, 2 km
SM5110-LR	10GBase-LR SFP+ LC Transceiver, single-mode, LC connector, 1310nm, 10 km
SM5110-SR	10GBase-SR SFP+ LC Transceiver, multi-mode, LC connector, 850nm, 300 m
SM6110-SR	25GBase-SR SFP28 LC Transceiver, MMF (Multimode fiber), LC connector, 850 nm, 100 m
SM6110-LR	25GBase-LR SFP28 LC Transceiver, SMF (Single-mode fiber), LC connector, 1310 nm, 10 km

## Direct Attach Cable

Model	Description
SM6220-1M	1 Meter 25G SFP28 Direct Attach Cable
SM5220-1M	1 Meter 10G SFP+ Direct Attach Cable
SM5220-3M	3 Meter 10G SFP+ Direct Attach Cable

## RJ45 SFP/SFP+ Modules

Model	Description
SM331T	1000BASE-T RJ45 SFP Module
SM5310-T	10GBASE-T RJ45 SFP+ Module

## MC Series Media Converter

Model	Description
MC210CS	Gigabit Single-Mode Media Converter, up to 20 km, chassis mountable
MC200CM	Gigabit multi-mode SC SFP Transceiver, up to 550 m, chassis mountable
MC200L	Gigabit SFP slot supporting mini-GBIC modules, chassis mountable
MC1400	14-slot power supply chassis for TP-LINK MC Series Media Converter, 19-inch rack-mountable

## FC Series Media Converter

Model	Description
FC311A-2	Gigabit Single-Mode WDM Media Converter, up to 2 km, TX:1550nm, RX:1310nm, chassis mountable
FC311B-2	Gigabit Single-Mode WDM Media Converter, up to 2 km, TX:1310nm, RX:1550nm, chassis mountable
FC311A-20	Gigabit Single-Mode WDM Media Converter, up to 20 km, TX:1550nm, RX:1310nm, chassis mountable
FC311B-20	Gigabit Single-Mode WDM Media Converter, up to 20 km, TX:1310nm, RX:1550nm, chassis mountable
FC1400	14-slot power supply chassis for TP-LINK FC Series Media Converter, 19-inch rack-mountable

†These functions require the use of the Omada Pro SDN Controller. Zero-Touch Provisioning requires the use of the Omada Pro Cloud-Based Controller.

Some models featured in this guide may be unavailable in your country or region. Visit TP-Link website for local sales information: [www.tp-link.com](http://www.tp-link.com).

Specifications are subject to change without notice. All the brands and product names are trademarks or registered trademarks of their respective holders. © 2024 TP-Link